



2000 Fairline

65' Squadron 65 - Velocity

Only 1300 hrs on upgraded CAT 3412s. 28 kt cruise with 35 kt top. 4 stateroom plus crew. All new soft goods. Fresh water until 2013. Truly in bristol condition!

- Power - Used - Motor Yachts
- Diesel Fuel
- Fiberglass Hull
- Ft Lauderdale Florida United States

New headliners, carpet, upholstery, sun pads, cushions, soft goods, Bimini top and enclosures, sunscreens and covers, TVs throughout, LED underwater lights. Plus, hull and top sides painted!

\$599,000 USD

€555,025 Euros \$844,442 CAD

FEATURES:

- Open Galley with new granite island
- Hull and top sides painted
- Underwater lights
- Bimini top

Description

65' Fairline Squadron-New to Market! Fresh water yacht until 2013 with 4 staterooms plus 2 separate crew rooms. Boat shows exceptionally well with many recent updates including custom Open Galley with new granite island, dual Garmin 7212 units, headliners, carpet, upholstery, sun pads, cushions, soft goods, Bimini tops and enclosures, sunscreens and covers, 7 flat screen TV's. New Lumishore underwater LED lights and bottom paint. Hull and top-side painted! Giving her the look and shine of a new vessel. New GarminT608 UNIS.

One would be hard pressed to find a yacht that has been updated and maintained to the degree of "Velocity". Once stepping aboard Velocity you will quickly appreciate her Bristol condition and the attention to detail that her meticulous owner has provided. A high quality yacht to explore the Bahamas, the solid and proven 19 degree deep v hull will be appreciated when crossing the Gulfstream and propeller tunnels allow you to explore the shallow waters. So whether owner operated or professionally crewed the 6 air conditioned rooms and 5 heads allow for plenty of space and privacy for everyone.

This is a yacht that will stand tall and proud at any marina or yacht club and make her new owner proud!

Only 1,300 Hrs. on CAT 3412E 1400 HP Engines!

Spare Props

Data Sheet

Category: Motor Yachts

Type: Power - Used

Year: 2000

Beam: 17' 4"

LOA: 66' 10" (20.37 meters)

Draft Max: 4' 9"

Cabins: 4

Single Berths: 6

Double Berths: 2

Heads: 4

Maximum Speed: 35 Knots

Cruise Speed: 28 Knots

Fuel Type: Diesel

Hull Material: Fiberglass

Dry Weight: 71680

Fuel Tank: 1105 Gallons (4182.88 Liters)

Fresh Water: 336 Gallons (1271.9 Liters)

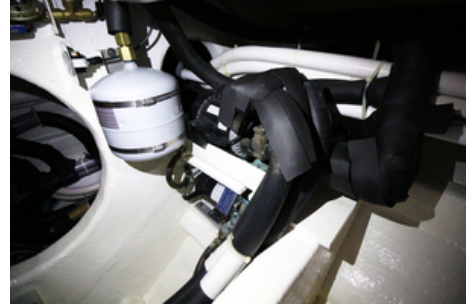
Holding Tank: 150 Gallons (567.81 Liters)

Featured Images









Engines

Engine 1

- Engine Make: CAT
- Engine Model: 3412E
- Engine Type: Inboard
- Power HP: 1400.00
- Power KW: 0.00
- Fuel Type: Diesel
- Engine Hours: 1217.00
- Engine Location: Port

Engine 2

- Engine Make: CAT
- Engine Model: 3412E
- Engine Type: Inboard
- Power HP: 1400.00
- Power KW: 0.00
- Fuel Type: Diesel
- Engine Hours: 1303.00
- Engine Location: Starboard

Full Details

Manufacturer Description

A handsome yacht with a striking profile, she rides on a solid fiberglass deep-V hull with propeller tunnels and a wide beam. The lush interior of the 65 Squadron has the cooking and dining areas forward, on the pilothouse level, and the socializing area aft. ("Velocity" is equipped with an open galley unlike the enclosed galley on the standard 65' Squadron and has a deck access door.) Four staterooms are on the lower level, including an opulent full-width master suite amidships, and there are also two crew cabins, one at the bow and the other under

the transom. Like many European motor yachts, the Squadron gives up some salon space in favor of wide side decks and a large aft deck—a good trade. The swim platform will stow an inflatable or jet ski, and the flybridge (accessed from the salon or aft deck) can seat a small crowd.

An additional major upgrade to "Velocity" are the CAT 3412EA engines boasting 1,400 HP provide a 28 knot cruise and a 35 Knot top speed compared to the standard 1,100hp MAN diesels, which cruise at 26 knots and reach a top speed of 31–32 knots.

Vessel Walkthrough

- Salon area: Two sofas port and starboard w/ a retractable rear window. Flat screen TV and bar are forward. Ice maker, wine chiller, Xbox & Marantz Gost security system.
- Forward: Open Galley to starboard w/ a retractable window port and starboard, and side access door.
- Dinette seating to port off galley w/ seating for 8
- Helm area is forward of Galley and starboard centerline.
- Helmside freezer.
- Midship Master stateroom: Queen Berth, Ensuite head, Fusion stereo
- Forward VIP: Queen Berth & Ensuite head
- Port Guest Room: Bunks & Ensuite Head
- Starboard guest room: Double or single berth & Ensuite head
- Separate washer and dryer in companionway
- Aft cockpit area provides access to salon and swim platform
- Aft crew: Two single berths w/ ensuite with head, shower and AC
- Forward crew: single berth w/ head and AC
- Fly-bridge
- Helm and navigation area forward of bridge
- Bar area provides: Grill, refrigerator, sink and ice maker
- Ample seating throughout w/ teak table
- New Retractable Bimini top
- Stairs to flybridge from salon and aft cockpit
- Crane on Flybridge

Salon

- New carpet - 2015
- New head liners - 2015
- Sofas recovered - 2015
- Vizio flat screen TV - 2015
- Homeage wine cooler - 2015
- Bose surround sound
- Ice maker
- Bar
- LED lighting
- Retractable rear window
- Air handler updated
- Sea Tel SAT TV (available)
- Marantz tuner, Xbox & DVD player

Galley - Open

- Head liners - 2015
- Granite counter tops - 2015
- (2) Frigidaire convection microwave
- (4) Burner hob stove-top
- Retractable port & starboard windows
- New Disposal - 2018
- Backsplash - 2015
- Miele dishwasher
- (2) Subzero refrigerator/freezer
- Dinette seating for 8
- Access to fly bridge
- Bose surround sound
- New Air handler

Master Stateroom

- King berth
- New Air handler
- New carpet
- New LED Lighting
- New upholstery
- Sofa
- Ample storage
- Bar
- Large hanging locker
- (4) Port hole windows w/ power shades
- Audio/Entertainment system

Ensuite head

- Full shower
- Ships safe
- Vacuflush head - New pumps
- New sanitation hoses
- Granite counter top
- Teak floors
- Port hole window w/ power shade

Forward VIP

- Queen Berth
- New air handler
- Audio/Entertainment system
- Hanging locker
- Ample storage
- New carpet - 2015
- New LED Lighting - 2015

Ensuite head

- Full shower
- Granite counter tops
- Vacuflush toilet
- New sanitation hoses
- Power shades
- New headliner & walls - 2019

Port Guest Stateroom

- (2) Single bunks
- (2) Hanging lockers
- Audio/Entertainment system

Ensuite head

- Full shower
- Granite counter tops
- Port hole windows
- Teak holly flooring

Starboard Guest Stateroom

- Single or double berth - folding couch
- Hanging locker
- Ample storage
- (2) Port hole windows
- New carpet
- Audio/Entertainment system
- New LED Lighting

Ensuite head

- Full shower
- Granite counter tops
- Port hole windows
- Teak holly flooring

Electrical

- New LED Lights throughout
- (3) Lumishore underwater lights
- Replaced 1 master volt battery 100AMP charger - 2015
- Replaced Inverter Master volt battery - 2015
- (2) 50 AMP shore power cords - New Glendenning cages - 2020
- (2) Garmin 7212 units
- (2) Garmin T608SVX GPS Units
- New accessible breakers in crew quarters

Fly Bridge

Navigation:

- Garmin 7608SXV
- Garmin 7212
- Furuno radar
- Raytheon Autopilot
- Raytheon Tridata gauges
- Raytheon Sounder displays
- (2) CAT Electronic displays
- Sidepower thruster
- Chain counter
- Analog gauges
- Compass
- Bennett trim tabs

Flybridge accommodations:

- Ample seating with storage underneath

Bar area provides:

- Grill
- Wet bar
- Ice maker
- Refrigerator
- Teak Table
- Stairs from the salon and aft deck
- Bimini Top
- Davit/Crane to accommodate two toys on fly-bridge and swim platform
- Kahlenberg Triple horn

Helm Area

- Garmin 7608SXV
- Garmin 7212
- Furuno radar
- Raytheon Autopilot
- Raytheon Tridata gauges
- Raytheon Sounder displays
- (2) CAT Electronic displays
- Sidepower bow thruster
- Chain counter
- Bennett trim tabs
- Analog gauges
- Compass
- Chart holders
- Refrigerator
- (2) Helm seats
- Electrical panel
- Side exit door

Forward Deck Area

- Stainless Delta Anchor
- Windlass
- Bow sunbathing cushions
- Cup holders
- Retractable Bimini top for sunpads

- Entrance to forward crew quarters
- Stowage lockers
- Fender holders

Aft Cockpit

- New Teak - 2019
- Teak Table - High/Low
- Camper cover
- LED lighting
- Recent cushions
- Cockpit Fusion speakers
- Fresh and raw water outlet
- (2) Enclosed fender storage compartment
- Custom Marquipt boarding ladder & swim platform ladder
- Wave runner or dinghy chocks
- Hot water shower

Engine Room

- ONAN Generator, 2315 hours, as of 1/6/2020
- 3412E CAT Engines
- 1217 star engine hours, as of 1/6/2020
- 1303 port engine hours, as of 1/6/2020
- New exhaust hoses - 2015
- Water maker HRO system new membrane
- Seafire system
- Custom dual racors in lazzerette
- (2) Sure seal dripless shaft seals

Crew Quarters

Aft crew

- New carpet
- Head
- Shower
- Single or double berth
- AC

Forward crew

- Single berth
- Head
- AC

Exclusions

Tender

Disclaimer

The company offers the details of this vessel in good faith but cannot guarantee or warrant the accuracy of this information nor warrant the condition of the vessel. A buyer should instruct his agents, or his surveyors, to investigate such details as the buyer desires validated. This vessel is offered subject to prior sale, price change or withdrawal without notice.

CONTACT BROKER



Atlantic Yacht & Ship, Inc.

Harbour Towne Marina
850 NE 3rd Street
Suite 213
Dania Beach FL 33004 USA
Phone: 954.921.1500
Toll Free: 888.602.8105
Fax: 954.921.1518
<https://atlanticyachtandship.com>



Atlantic Sales

Yacht Sales

Harbour Towne Marina
850 NE 3rd Street
Suite 213
Dania Beach FL 33004 USA
Office: 954.921.1500
Email: info@ayssales.com

