



2015 Riviera

77' Sportfish

For Sale

- Power - Used - Sport Fishing
- Diesel Fuel
- Fiberglass Hull
- Dubai United Arab Emirates

77' Riviera Enclosed Bridge

\$3,650,000 USD
€3,270,046 Euros \$4,892,369 CAD

NOT FOR SALE TO US RESIDENTS WHILE IN US WATERS

Tax Not Paid

Vessel ID# 2756767

Description

Manufacturers Description:

The safety, comfort and performance of any ocean-going yacht is contingent on the design and manufacture of the hull, and this is particularly important with large, long-range vessels as they are more likely to encounter severe seas and challenging weather conditions. The Riviera 77 Enclosed Flybridge falls into the serious long-range category and we have created a hull that is well proven to meet this objective. It is as responsive as it is robust and features tunnels housing the propeller shafts, contributing to a lower shaft angle and

delivering impressive thrust. The 10-degree dead-rise to the transom also ensures she is quick to plane and offers a smooth, dry ride. As you will discover, Riviera's renowned ethos of excellence is expressed in many ingenious ways throughout the 77 Enclosed Flybridge – the largest and most luxurious Riviera ever. She has sleek lines, a sports-inspired cockpit, a fully enclosed flybridge with spacious rear deck and a new sports-styled targa; her sweeping safety glass feature panels create a stylish surface finish that visually links her contemporary, recessed hull windows and the distinctive design of her engine room air intakes. Pioneering in so many respects ... yet with everything in perfect proportion.

Data Sheet

Category: Sport Fishing
Type: Power - Used
Year: 2015
Beam: 20' 9"
LOA: 77' " (23.00 meters)
Draft Max: 5' 9"
Cabins: 4
Double Berths: 2
Queen Berths: 5
Heads: 4

Maximum Speed: 33 Knots
Cruise Speed: 27 Knots
Range NM: 1600
Fuel Type: Diesel
Hull Material: Fiberglass

Fuel Tank: 1268 Gallons (Liters)
Fresh Water: 349 Gallons (Liters)
Holding Tank: 132 Gallons (Liters)
Builder: Riviera Yachts Australia
Designer: Riviera Yachts Australia

Featured Images



Profile View



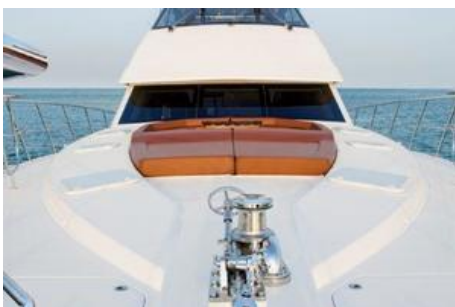
Bow



Running Shot



Overhead



Bow Sunpad and Lounge Area



Skylounge

Bow Lounge Seating



Skylounge

Helm



Helm and Skylounge



Flybridge Aft



Main Salon and Galley Aft



Main Salon Looking Forward



Galley



Mezzanine Seating Aft of Main Salon



Master Stateroom



VIP Stateroom



Guest Head



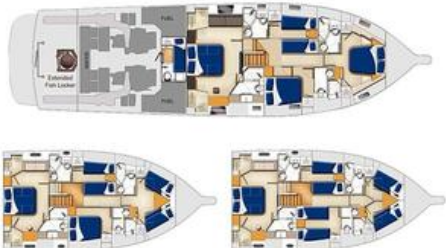
Guest Bunk Room



Spiral Stairs from main salon to flybridge/sky-lounge



Cockpit BBQ Grill



General Arrangement-Lower Deck

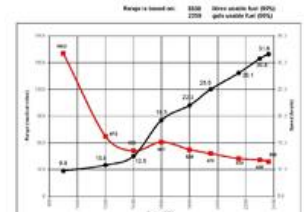


Line Drawing



General Arrangement-Flybridge

	24	30	36	42	48	54	60
SEA	0.5	1.0	1.5	2.0	2.5	3.0	3.5
CRUISE	10.0	14.0	18.0	22.0	26.0	30.0	34.0
WIND	12.0	16.0	20.0	24.0	28.0	32.0	36.0
SEA	18.0	24.0	30.0	36.0	42.0	48.0	54.0
WIND	22.0	28.0	34.0	40.0	46.0	52.0	58.0
SEA	28.0	36.0	44.0	52.0	60.0	68.0	76.0
WIND	34.0	42.0	50.0	58.0	66.0	74.0	82.0
SEA	40.0	50.0	60.0	70.0	80.0	90.0	100.0
WIND	48.0	60.0	72.0	84.0	96.0	108.0	120.0
SEA	56.0	70.0	84.0	98.0	112.0	126.0	140.0
WIND	64.0	80.0	96.0	112.0	128.0	144.0	160.0
SEA	72.0	90.0	108.0	126.0	144.0	162.0	180.0
WIND	80.0	100.0	120.0	140.0	160.0	180.0	200.0



Performance Specs

Engines

Engine 1

- Engine Make: MAN V-12
- Engine Model: D2862LE433
- Engine Type: Inboard
- Drive: Direct

Engine 2

- Engine Make: MAN V-12
- Engine Model: D2862LE433
- Engine Type: Inboard
- Drive: Direct

- Power HP: 1800.00
- Power KW: 1342.26
- Fuel Type: Diesel
- Engine Hours: 635.00
- Engine Location: Port

- Power HP: 1800.00
- Power KW: 1342.26
- Fuel Type: Diesel
- Engine Hours: 637.00
- Engine Location: Starboard

Full Details

Steering System

Joystick Control

Dimensions

- LOA: 81' 2"
- LWL: 75' 10"
- Beam: 20' 9"
- Max Draft: 5' 9"
- Bridge Clearance: 19' 2"
- Cockpit Area: 177.6 sq/ft
- Mezzanine Area: 76.4 sq/ft

Engines

- Main Engines: MAN V12-1800 HP Each
- Port Engine: 635
- Starboard Engine: 637
- Gearbox: Twin Disc 2.48:1 Model MGX6599A w/"EJS" Express Joystick Control
- Propellers: Veem 42"x45.5"x5 blades
- Bow and Stern Thrusters through the Twin Disc "Express Joystick System"
- Generator: 2 X Onan 27 KW with controls at helm and auto start feature when nearing load limit.

Range:

- 1602nm @ 9.8 kts, 900rpm's, 13.7 gph, 1.4 gal/nm
- 672nm @ 10.5 kts, 1200rpm's, 36.3 gph, 3.4 gal/nm
- 523nm @ 22 kts, 1800rpm's, 95.1 gph, 4.3 gal/nm
- 422nm @ 28.1 kts, 2150rpm's, 150.2 gph, 5.4 gal/nm

Tankage

- Fuel Capacity: 2,496 US Gallons
- Water Capacity: 349 US Gallons
- Holding Tank: 132 US Gallons

Navigation/Communication

- KVH M7 Satellite TV System w/5 Receivers
- KVH Dummy Dome
- Ericson W35 Phone/Internet System
- Raymarine GS165 Multi-Function Displays At Helm X 3
- Raymarine RS130 GPS
- Raymarine CP450C Chirp Sounder
- Raymarine B265 Chirp Transducer
- Raymarine 4KW 72NM HD Radar Scanner
- Raymarine P70R/ACU-300 Solenoid Autopilot System
- Raymarine P70R Control At Docking Stations

- Raymarine A75 7" Multi-Function Displays At Aft Docking Station X 2
- Camera Network To Allow 4 Cameras To Be Displayed On Port Nav Screen
- Iris Camera Aft Flybridge
- Bullet Camera In Cockpit
- Engine Room Camera

Equipment

- SEAKEEPER 26 Gyro Stabilizer
- Upgraded Generators from 22.5 KW to 27KW
- Upgraded Aircon for tropical climates (reverse cycle)
- MUIR Anchoring System and Winches
- 2 Shore power cords on cable masters
- Oil change system for main engines, generators, and transmissions
- Veems S-Class Propellers
- Bronze rudders
- Bronze struts
- Duplex stainless steel shafts with PSS dripless shaft seals
- Bow Thruster 15.5 HP
- Steering--Hydraulic power-assisted
- Trim tabs with position indicators at the helm
- Emergency bilge pump with manifold system
- Sanitation system-integrated into CZone with overboard pump out and deck fitting for dockside pump out.
- LED Lighting Throughout
- Trasom is pre-wired with 12V for a backlit name board
- Exterior lighting upgraded with LED lighting that turns blue or white
- 2 x LED Lumitec Macillum Flood Lights on the hard top
- SS Mounting plate in the cockpit floor for future fighting chair installation
- Underwater Lights-- x11 Aqualuma Series 12. 5 in the transom, 3 port side, & 3 starboard side.
- Laundry in Engine Room with separate washer and dryer
- Hydraulic RUPP Outriggers
- Hydraulic swim platform with a 600kg/1300 lb lifting capacity
- Pre-wired and pre-plumbed for future water maker installation
- Liferrafts-2 x 8 passenger ISO9650-1 fitted to the hardtop
- Engine room ventilation system with de-misters and fans

Riviera C ZONE

C ZONE SIMPLICITY

The fully integrated CZone digital switching system enhances the ease of monitoring and operation of the Riviera 77's onboard systems including tanks, and extends centralised, touchscreen control to lighting, pumps, batteries, entertainment systems and appliances. CZone allows owners to operate multiple circuits at a single touch, energising all lighting and electrics depending on your requirements. It comes pre-programmed with three modes –"entertaining", "cruising" and "dock unattended" – and these modes can be customised by the owner so the system works exactly how you want.

Other user-friendly features include interior light-dimming, timer controls, automated circuit control, wiper speed and wash functions. There's also a "service" mode that shuts down all power and systems. Based on industry-proven Controller Area Network (CAN) technology, the CZone system offers DC and AC switching and over-current protection.

Full systems monitoring (with alarms) including AC voltage, current, frequency and kilowatts, DC voltage, current and remaining battery capacity, along with fluid tank levels and indication for systems in operation, is clearly displayed on the 10-inch touchscreen at the helm and at the saloon entrance, with third 8-inch screen to the master stateroom, engine room or crew cabin.

There's also additional iPad connectivity, so you can control CZone from anywhere onboard your yacht.

Deck Overview

- Bow rail in stainless steel (316-grade stainless steel, highly polished) with full mid-rail including flag staff and burgee
- Hand rails to port and starboard above the saloon windows for safe passage to the forward deck
- Stainless steel fender holders (2 x dual)
- Stainless steel Ultra Anchor with short link galvanised chain and a stainless steel slimline swivel
- Devil's claw anchor chain tensor and chain stopper fitted on the deck for secure sea passage
- Anchor locker with watertight bulkhead, two access hatches on foredeck with divider offset to starboard
- Vertical anchor winch with overload protection circuit breaker and manual brake to suit rope and chain operated via plug-in up/ down remote control and incorporating chain counter
- Heavy duty bow roller in stainless steel, self-loading through the bow sprit

- Cleats are 12" oval stainless steel, 12" (8x) in addition to hawseholes (2x) and pop-up fender cleats (2x)
- Gunwale rail is impact and UV-resistant white PVC with a stainless steel insert strip
- High-pressure, freshwater cleaner with outlets at the anchor locker and cockpit
- Wash-down outlets (salt and freshwater) are located at the anchor locker and in the cockpit with accumulator tanks, freshwater outlet to the flybridge, coiled hose with quick disconnect fittings supplied
- Optional forward deck lounge area including large cushioned sun pad, teak table with stainless steel drink-holders and white stamoid cover

Mezzanine and Cockpit

Mezzanine Overview:

- Alfresco mezzanine-seating and dining area with large aft-and forward facing lounge.
- Fixed varnished teak table
- Marine grade stainless steel hand rails and six rod-holders
- Wet bar and drawer refrigeration located on the starboard side of the mezzanine space.
- Rear saloon door and large awning window are tinted and tempered glass set in highly polished, marine-grade stainless steel frames. The window opens from the galley and enhances the yacht's alfresco ambience.
- Optional quarter panel clears in strata glass
- Optional enclosed clears with air-conditioning

Cockpit Overview:

- Large boarding platform including recessed stainless steel swim ladder and hand rail with hatch, with options for teak decking and an hydraulic lift.
- Strong transom door to starboard opens outwards and features a lift-up safety bridge.
- Expansive self-draining cockpit
- Teak-laid cockpit floor and mezzanine steps
- Steps to the wide side decks to port and starboard are also teak laid and illuminated with LED lighting.
- Cockpit hatches feature heavy-duty stainless steel lock-downs and gas struts.
- Storage lockers feature anti-vibration doors
- Storage bin with pump-out feature
- Mechanically ventilated lazarette with LED lighting
- LED lighting throughout, including floodlights, overhead colour change down lighting and courtesy lighting
- Double-action manual emergency bilge pump with manifold system
- Lockable engine room access with ladder to assist entry
- Hand-held shower with fresh hot and cold water
- Hawseholes (2x) in the rear corners
- Optional heavy-duty rod-holders secured to coaming, optional rope winches to aft cockpit corners
- Entertainment to the cockpit is via a high quality Yamaha system with amplifier and two speakers, controlled from the saloon
- Docking station in cockpit with "Express Joystick System" on the port side
- 177.6 sq/ft cockpit
- 76.4 sq/ft mezzanine
- Access to flybridge via ladders port and starboard side
- Tackle drawers on the starboard side
- 6 rod holders in the coamings
- Custom engine room access from mezzanine
- Large fridge & freezer
- Engine room access
- Transom as 2 electric BBQ grills
- Reinforced transom and customized to have 2 transom doors that open out.
- Hydraulic RUPP Outriggers
- Hydraulic Swim Platform 600kg/1322 lbs.

Galley

- Galley is to port when you enter the salon with easy access to the cockpit mezzanine seating & dining area.
- Miele Appliances
- Built-in overhead storage cabinetry with positive locking hardware
- Premium Miele combination oven/microwave with integrated grill
- High-end four-element induction cooktop with removable stainless steel pot-holder
- Dedicated crockery and cutlery drawers with dividers and linings
- Premium brand dishwasher

- Extraction fan for ventilation
- Hard-wearing, timber-patterned premium flooring
- Two drawer fridges and two drawer freezers in galley
- Solid surface bench top with granite or marble finish and stainless steel sink with mixer tap ware
- Water purifier integrated with cold water tap
- Optional trash compactor
- Optional back-lit breakfast bar with two bar stools to starboard

Main Salon

- Staircase - Forward Saloon - Leather Rapped Handrail Down Stairs To Match Vinyl Colour On The Dash
- Saloon - Extended Upper Floor Area Aft, Reduced Galley Size & Creating Large Open Area. Saloon Stb Side To Include Bar Area 2 Stools & Book Shelf, 55" Hi/Lo Tv & Lamps, Integrate Bose Surround Sound System Wifi
- Internal Staircase To Flybridge Modified To Reduce The Amount Of Space It Occupies
- Saloon Forward Windscreen Blind Oceanair Electric
- Forward Saloon - Convert Solid Grp Windscreen To Be Tinted Heat Reflective Glass, Saloon Dash Change To Cut-Out "Atrium" (To Increase Natural Light To Lower Companionway)
- Saloon Windscreen Covers - Additional Interchangeable Cover To Front And Sides In Canvas (White Stamoid)
- Saloon - Onyx Feature Stone Benchttop As Per Drawing/Concept And Bar Stools To Be Stainless Steel Pedestal With Round Seat Cushion In Ostrich & Brown Piping
- Saloon Forward Dash To Be Changed To Have 400-500Mm Drink Holder Tray Recessed Into The Dash Top Stb Side

Master Stateroom

Master Stateroom Overview:

- Full beam master located aft with double sound insulation in the bulkhead
- Reverse-cycle air-conditioning split to ensuite
- Bedside tables with drawers and featuring leatherette inlay to tops
- King-sized walk-around bed with premium latex mattress and feature headboard with tailored upholstery
- Two-seater leather lounge to port
- His and hers walk-in wardrobes with cedar linings, shelving and automatic LED lighting
- Large recessed drawers to port and starboard under bed for storage
- Plush pile carpeting with premium rubber underlay
- Long fixed glass windows with roller blinds
- Reading, courtesy and overhead LED lighting with dimmer controls
- Safe for valuables fitted to wardrobe
- Timber-framed, full-length dressing mirrors to the inside face of wardrobe entry doors
- Writing bureau featuring timber top with leatherette inlay and concealed mirror lined make-up/jewellery case, including stool, storage and power outlet
- Entertainment to the master stateroom is via Yamaha sound system with LED TV and speakers

Master Stateroom Ensuite Overview:

- Reverse-cycle air-conditioning split from master stateroom
- Contemporary design marble vanity bench top with porcelain bowl and quality mixer tap ware
- Extraction fan for ventilation
- Heated towel rails
- High quality ceramic tile flooring
- Overhead and vanity LED lighting
- Porthole, fixed glass window with roller blind
- Shower head on slide bar
- Shower stall with frameless glass door, partition, teak seat and sump pump
- Full-sized fresh water toilet
- Toilet roll holder and accessories
- Towel ring
- Vanity cabinet with mirror and storage under
- Full mirror ceiling

VIP Stateroom

Forward VIP Guest Stateroom Overview:

- Reverse-cycle air-conditioning split to ensuite
- Bedside tables with drawers and leatherette inlay to tops
- Dresser cabinet aft, drawers and feature leatherette in-laid top
- Full-height, cedar-lined hanging locker with automatic LED lighting to port and starboard
- Full-height, cedar-lined wardrobe with shelves to port
- Hatch with Oceanair screen and blind (2)
- Queen-sized walk-around bed with innerspring mattress and upholstered feature headboard, lifts up with gas struts to reveal storage underneath
- Plush pile carpeting with premium rubber underlay
- Porthole, fixed glass window with roller blind
- Reading, courtesy and overhead LED lighting with dimmer control
- Storage cabinets overhead with positive locking hardware
- Entertainment to the VIP guest stateroom is via a flatscreen TV with Blue-ray player and speakers

Forward VIP Guest Stateroom Ensuite Overview:

- Reverse-cycle air-conditioning split from VIP guest stateroom
- Contemporary design marble vanity bench top with porcelain bowl and quality mixer tap ware
- Extraction fan for ventilation
- Hatch with Oceanair screen and blind
- Heated towel rail
- High quality ceramic tile flooring
- Overhead and vanity LED lighting
- Shower stall with frameless glass door and shower head on slide bar
- Full-sized fresh water toilet
- Toilet roll holder & accessories
- Towel ring
- Vanity cabinet with mirror and storage underneath

Port Guest Stateroom

Guest Stateroom Overview - Port:

- Reverse-cycle air-conditioning split to ensuite/day head
- Bedside table with drawers and leatherette inlay to tops
- Full-length mirror behind door
- Hanging locker with cedar lining and automatic LED lighting
- Hatch with Oceanair screen and blind
- Three adult-sized single bunk beds with innerspring mattresses. The upper inboard berth folds up when not in use and there is storage under the lower berths
- Headboard with tailored upholstery featuring mirror accents
- Plush pile carpeting with premium rubber underlay
- Porthole, fixed glass window with roller blind
- Reading and overhead LED lighting
- The flexible design allows for this stateroom to become an optional games room or office space

Guest Stateroom Ensuite/Day Head Overview - Port:

- Reverse-cycle air-conditioning split from port stateroom
- Contemporary design marble vanity benchtop with porcelain bowl and quality mixer tap ware
- Extraction fan for ventilation mounted in engine room for quiet operation
- Hatch with Oceanair screen and blind
- Heated towel rail
- High quality ceramic tile flooring
- Overhead and vanity LED lighting
- Porthole, fixed glass window with roller blind
- Shower stall with frameless glass door, automatic sump pump and shower head on slide bar
- Full-sized fresh water toilet
- Toilet roll holder and accessories
- Towel ring
- Vanity cabinet with mirror and storage underneath

Starboard Stateroom-Playroom-Office

Guest Stateroom/Playroom/Office Overview - Starboard:

- Reverse-cycle air-conditioning split to ensuite
- Pullman Bunk and Desk
- Full-length mirror behind door
- Hanging locker with cedar lining and automatic LED lighting
- Hatch with Oceanair screen and blind
- Single Drawer Fridge, Drawer Storage, and Office Desk
- Flooring Upgrade To Commercial Grade Vinyl Flooring
- Porthole, fixed glass window with roller blind
- Reading and overhead LED lighting
- Entertainment to this stateroom is via a 40" flatscreen TV with Blueraay player and speakers

Guest Stateroom Ensuite Overview - Starboard:

- Reverse-cycle air-conditioning split from the starboard guest stateroom
- Contemporary design marble vanity benchtop with porcelain bowl and quality mixer tap ware
- Extraction fan for ventilation mounted in engine room for quiet operation
- Hatch with Oceanair screen and blind
- Heated towel rail
- High quality ceramic tile flooring
- Overhead and vanity LED lighting
- Shower stall with frameless glass door and shower head on slide bar
- Full-sized fresh water toilet
- Toilet roll holder & accessories
- Towel ring
- Vanity cabinet with mirror and storage underneath

Flybridge Lounge

- The staircase to flybridge is located aft and features satin finish floating walnut treads with non-slip surfaces
- Luxurious flybridge enclosed on all four sides
- Reverse-cycle air-conditioning with outlets at the helm, windscreen demister and aft of the flybridge interior space
- Tinted side windows enhance natural light and blinds to windows on all four sides
- Electric-opening sunroof built into the flybridge hardtop
- Flybridge wet bar which has a solid surface, marble or granite bench top, drawer refrigerator, icemaker and stainless steel sink with fold-down tapware
- High quality timber-patterned internal flooring
- Overhead and courtesy LED lighting and red night lighting
- Generous L-shaped lounge in premium leather with drawers underneath for storage
- Walnut folding dinette table mounted on electric angled hi-lo pedestal with slider allowing table to drop down and become a coffee table
- Elliptical overhead stainless steel safety hand rails
- Entertainment to the flybridge is via a flatscreen TV on an electric lift, Blue-ray player and Yamaha sound system with speakers

Flybridge Helm

Flybridge Helm Overview:

- Striking ergonomic helm design
- Excellent visibility through massive windscreen
- Three heavy-duty pantograph windscreen wipers with intermittent control settings and including fresh water washers
- Easy access to controls
- Pompanette Platinum helm seats (2x)
- Optional chaise lounge forward to starboard
- Compass with light
- Drink holders
- Electronic engine control unit, twin lever throttle
- Fuel, water and holding tank monitoring via CZone display
- Helm electronics area with 24VDC feed
- Intercom to galley, crew cabin and master cabin
- Searchlight on hardtop, remote control at helm
- Premium quality sports steering wheel
- VHF radio with hailer and remote to the aft helm position, including aerial

Flybridge Aft Deck Overview:

- Stainless steel rear bulkhead incorporating a manual hinge out door and awning style rear window in a highly polished stainless steel frame
- Teak-laid external decking
- Aft docking station including secondary controls including twin levers, engine start/stop, thruster controls, VHF remote and stainless steel steering wheel, with optional EJS
- Marine-grade stainless steel rails including mid rails
- Spotlights moulded into the flybridge hardtop
- Strataglass rear enclosure from hardtop to the flybridge floor with opening zipper windows
- Entertainment to the aft deck of the flybridge is via a second zone speaker system from the flybridge entertainment system

Electronics:

- A comprehensive range of factory-fitted electronic packages and custom features are available with everything from radar to underwater lights.

Foredeck Lounge-Sunpad

- For serious sunning or perhaps quiet contemplation, nothing compares with the sense of space and freedom of the 77's massive forward deck.
- Wide, illuminated side decks with toe rail, high stainless steel side rails as well as hand rails conveniently positioned above the saloon windows provide safe access, especially for children and pets.
- The forward deck has a lavish sun pad and a casual dining/sitting area where side tables and drink-holders enhance her luxury lifestyle and relaxation attributes.
- This recessed area can also accommodate your tender, if so desired, making it more secure and less obtrusive from the side profile.
- A vast array of anchoring equipment is stored neatly in her deep bow lockers – conveniently out of sight but right there when you need it.

Disclaimer

The Company offers the details of this vessel in good faith but cannot guarantee or warrant the accuracy of this information nor warrant the condition of the vessel. A buyer should instruct his agents, or his surveyors, to investigate such details as the buyer desires validated. This vessel is offered subject to prior sale, price change, or withdrawal without notice.

CONTACT BROKER



Atlantic Yacht & Ship, Inc.

Harbour Towne Marina
 850 NE 3rd Street
 Suite 213
 Dania Beach FL 33004 USA
 Phone: 954.921.1500
 Toll Free: 888.602.8105
 Fax: 954.921.1518
<https://atlanticyachtandship.com>



Atlantic Sales

Yacht Sales
 Harbour Towne Marina
 850 NE 3rd Street
 Suite 213
 Dania Beach FL 33004 USA
 Office: 954.921.1500
 Email: info@ayssales.com

